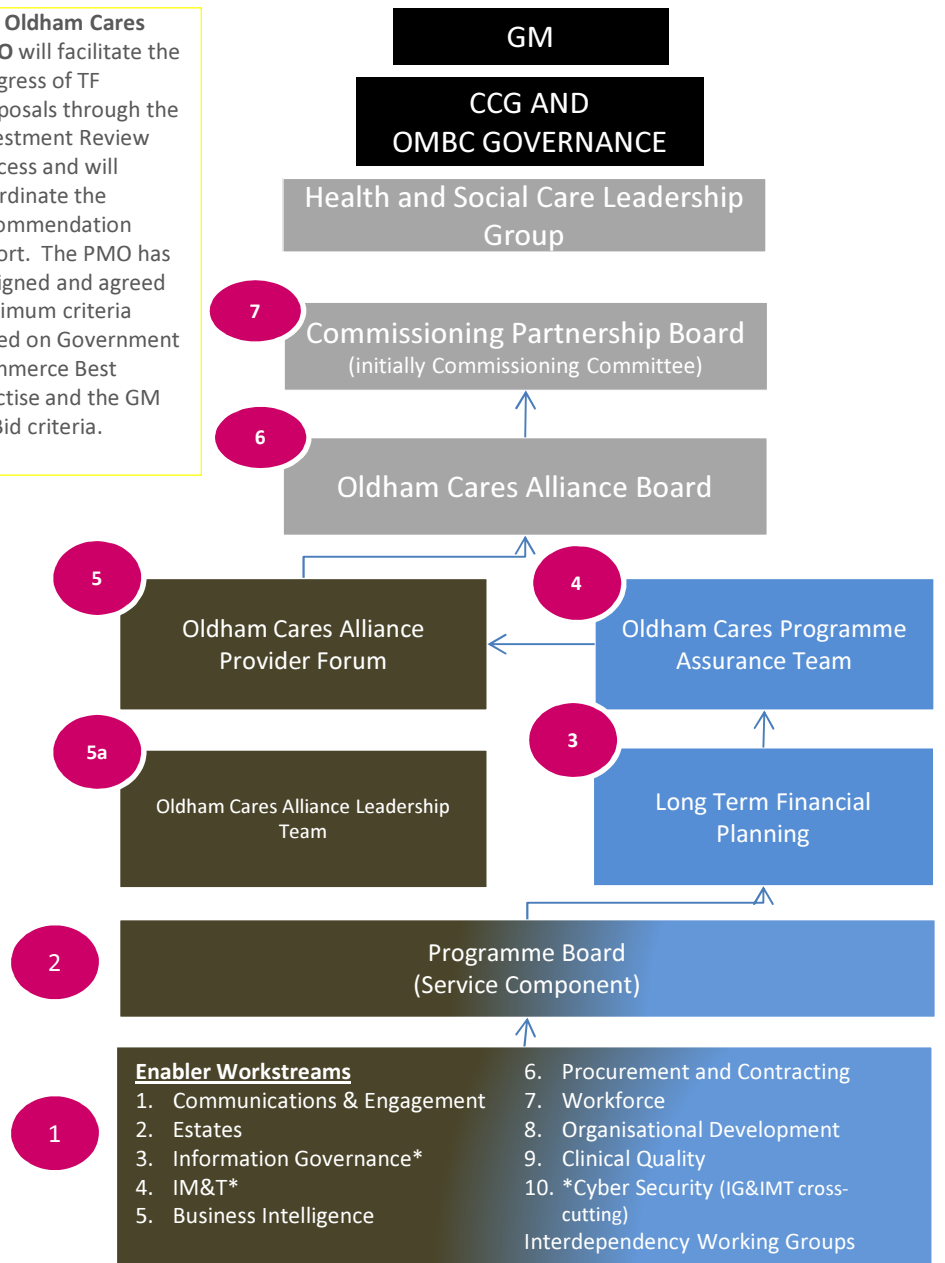


# Oldham Cares Investment Review and Assurance Process

**OLDHAM CARES PROGRAMME MANAGEMENT OFFICE**

The **Oldham Cares PMO** will facilitate the progress of TF proposals through the Investment Review process and will coordinate the recommendation report. The PMO has designed and agreed minimum criteria based on Government Commerce Best Practise and the GM TF Bid criteria.



- 7 The **Commissioning Partnership Board** gives overall approval to the GM Transformation Fund spend in line with Commissioning intentions and the Outcome Framework, Section 75 arrangements. The H&SC LG will receive proposals prior to the CPB
- 6 The **Oldham Cares Alliance Board** will operate as a joint Executive Management Team overseeing the programme to establish the Alliance and the service transformation
- 5 The **Oldham Cares Alliance Provider Forum** includes providers who have signed the MOU/Alliance and will operate as a joint partnership team to develop a strategy for the 90 providers. This will act as a 'sense check' as to whether the proposals can be delivered operationally. The **Alliance Leadership Team** may wish to look at cases in more detail
- 4 The **Oldham Cares Programme Assurance Team** brings together Sponsors of service transformation in eight key areas to review, consolidate, plan, and assure change plans. This group will review proposals to ensure they are aligned to a system wide transformation approach
- 3 The **Long Term Financial Planning Group** will develop the long term financial model for the Oldham Locality plan factoring the impact of pathway interventions and efficiency requirements. It will review proposals for financial sustainability
- 2 Each Service Component has a **Programme Board**:
  - Community Enablement Programme Board
  - Health improvement Programme Board
  - Mental Health Strategy Partnership
  - Primary Care Programme Board
  - Start Well Programme Board
  - Thriving Communities Programme Board
  - Urgent Care Transformation Board
- 1 The **Enabler Workstreams** work at a strategic and operational transformation level, providing specialist support. **Interdependency Working Groups** will be established on an ad-hoc basis to analyse complex systems and/or work requiring technical expertise